

Discussion of
Lombardi, Kohlscheen, Mojon, Zakrajsek, Kharroubi, da Silva

Inequality Hysteresis

by Alfonso Rosolia
Banca d'Italia

*IARIW - Banca d'Italia
Central banks, financial markets, and inequality
Naples, March 29-April 1 2023*

Fact: Inequality increases and remains high after (start of) recessions.

Fact: Inequality increases and remains high after (start of) recessions.

Are (early stages of) recessions different?

Fact: Inequality increases and remains high after (start of) recessions.

Are (early stages of) recessions different?

Can you characterize more the economies at onset of recession?
(e.g. demo structure, HH income composition, ER-PR by age, inequality)

Fact: Inequality increases and remains high after (start of) recessions.

Are (early stages of) recessions different?

Can you characterize more the economies at onset of recession?
(e.g. demo structure, HH income composition, ER-PR by age, inequality)

Magnitudes and stat significance of effects?
($\Delta_{\text{Top10}} \approx 1.2\text{pp}$, $\Delta_{\text{Bot50}} \approx -0.4\text{pp}$, $\Delta(\text{Top10}/\text{Bot50}) \approx 0.2\text{pp}$)

Fact: Inequality increases and remains high after (start of) recessions.

Are (early stages of) recessions different?

Can you characterize more the economies at onset of recession?
(e.g. demo structure, HH income composition, ER-PR by age, inequality)

Magnitudes and stat significance of effects?
($\Delta_{\text{Top10}} \approx 1.2\text{pp}$, $\Delta_{\text{Bot50}} \approx -0.4\text{pp}$, $\Delta(\text{Top10}/\text{Bot50}) \approx 0.2\text{pp}$)

What about inequality developments after trough?

Fact: At start of recession ($\Delta GDP_t < 0$) percapita consumption drops more the higher the top 10% share.

Fact: At start of recession ($\Delta GDP_t < 0$) percapita consumption drops more the higher the top 10% share.

How about recoveries? Implications for (a)symmetry and breadth of BCs?

Fact: At start of recession ($\Delta GDP_t < 0$) percapita consumption drops more the higher the top 10% share.

How about recoveries? Implications for (a)symmetry and breadth of BCs?

Evidence presented as if less inequality smooths C drop. Confounders? Ineq and depth jointly affected by same forces? First pass: drop country FE. What happens to results?

Fact: At start of recession ($\Delta GDP_t < 0$) percapita consumption drops more the higher the top 10% share.

How about recoveries? Implications for (a)symmetry and breadth of BCs?

Evidence presented as if less inequality smooths C drop. Confounders? Ineq and depth jointly affected by same forces? First pass: drop country FE. What happens to results?

Can COICOP be used to see if items explaining drop consistent with narrative of poorer ppl more exposed ?

Inequality makes MP less effective

Fact: Percapita C responds less to a standard (i.e. orthogonal to BC developments) MP shock.

Inequality makes MP less effective

Fact: Percapita C responds less to a standard (i.e. orthogonal to BC developments) MP shock.

When ineq is higher, are recessions deeper because MP less effective or is MP less able to stabilise because recessions are deeper?

Fact: Per capita C responds less to a standard (i.e. orthogonal to BC developments) MP shock.

When ineq is higher, are recessions deeper because MP less effective or is MP less able to stabilise because recessions are deeper?

(How do MP shocks correlate with previous recessionary episodes?)

Fact: Per capita C responds less to a standard (i.e. orthogonal to BC developments) MP shock.

When ineq is higher, are recessions deeper because MP less effective or is MP less able to stabilise because recessions are deeper?

(How do MP shocks correlate with previous recessionary episodes?)

MP shocks are "shocks", unrelated to BC developments. We would not expect C to respond to shocks in a complete mkt setting.

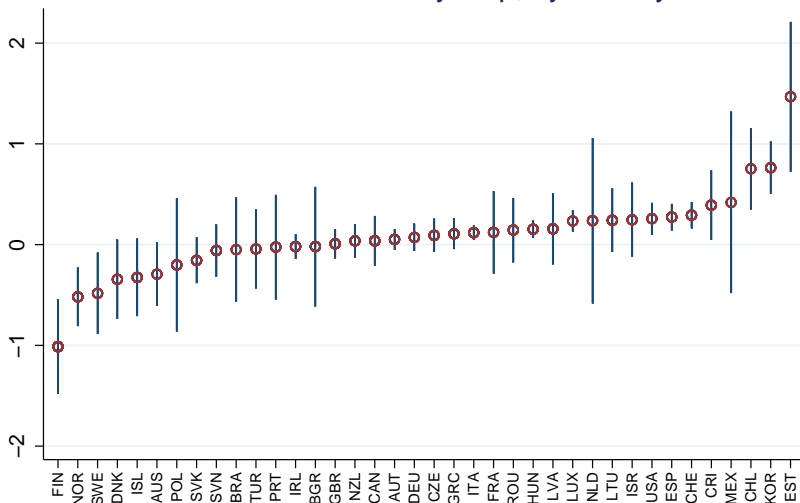
What inequality?

Mostly focus on income Gini (households) and top 10% (individuals).

What inequality?

Mostly focus on income Gini (households) and top 10% (individuals).

GINI = a + b Poverty Gap, by country



Based on OECD data

Data, data data!!!

Great work, puts together relevant indexes, sources and literature to shed light on central and hot policy issues.

Data, data data!!!

Great work, puts together relevant indexes, sources and literature to shed light on central and hot policy issues.

Stronger and stronger need for distributional statistics consistent with macro data and national accounts.

Great work, puts together relevant indexes, sources and literature to shed light on central and hot policy issues.

Stronger and stronger need for distributional statistics consistent with macro data and national accounts.

Promising developments at the G20 level: new G20 DGI aims at compiling income, consumption and wealth distributional stats integrated with NAs.

Great work, puts together relevant indexes, sources and literature to shed light on central and hot policy issues.

Stronger and stronger need for distributional statistics consistent with macro data and national accounts.

Promising developments at the G20 level: new G20 DGI aims at compiling income, consumption and wealth distributional stats integrated with NAs.

Thank you